

Contract Pond Number: 83 (Approximate Acreage 0.9)



Access Point: Access end of cul de sac of Leishear Court
Clear Spring, MD 21722

Retention Pond Mowing Services
Section A (North)



Contract Pond Number: 84 (Approximate Acreage 0.1)



Washington County
STORMWATER AND WATERSHED SERVICES



Access Point: Access either side of Leishear Court at
beginning Clear Spring, MD 21722

Retention Pond Mowing Services
Section A (North)



Contract Pond Number: 80 (Approximate Acreage 1.6)



Access Point: Access next to 13434 Rhodes Court Clear
Spring, MD 21722

Retention Pond Mowing Services
Section A (North)



Contract Pond Number: 79 (Approximate Acreage 1.1)



Access Point: Access B/t 12534 and 12524 Garrow Drive
Clear Spring, MD 21722

Retention Pond Mowing Services
Section A (North)



Contract Pond Number: 82 (Approximate Acreage 1.1)



Washington County

STORMWATER AND WATERSHED SERVICES



Access Point: Access B/t 13903 and 13909 McIntosh
Circle Clear Spring, MD 21722

Retention Pond Mowing Services
Section A (North)



Contract Pond Number: 81 (Approximate Acreage 1)



Access Point: Access B/t 13931 and 13939 McIntosh
Circle Clear Spring, MD 21722

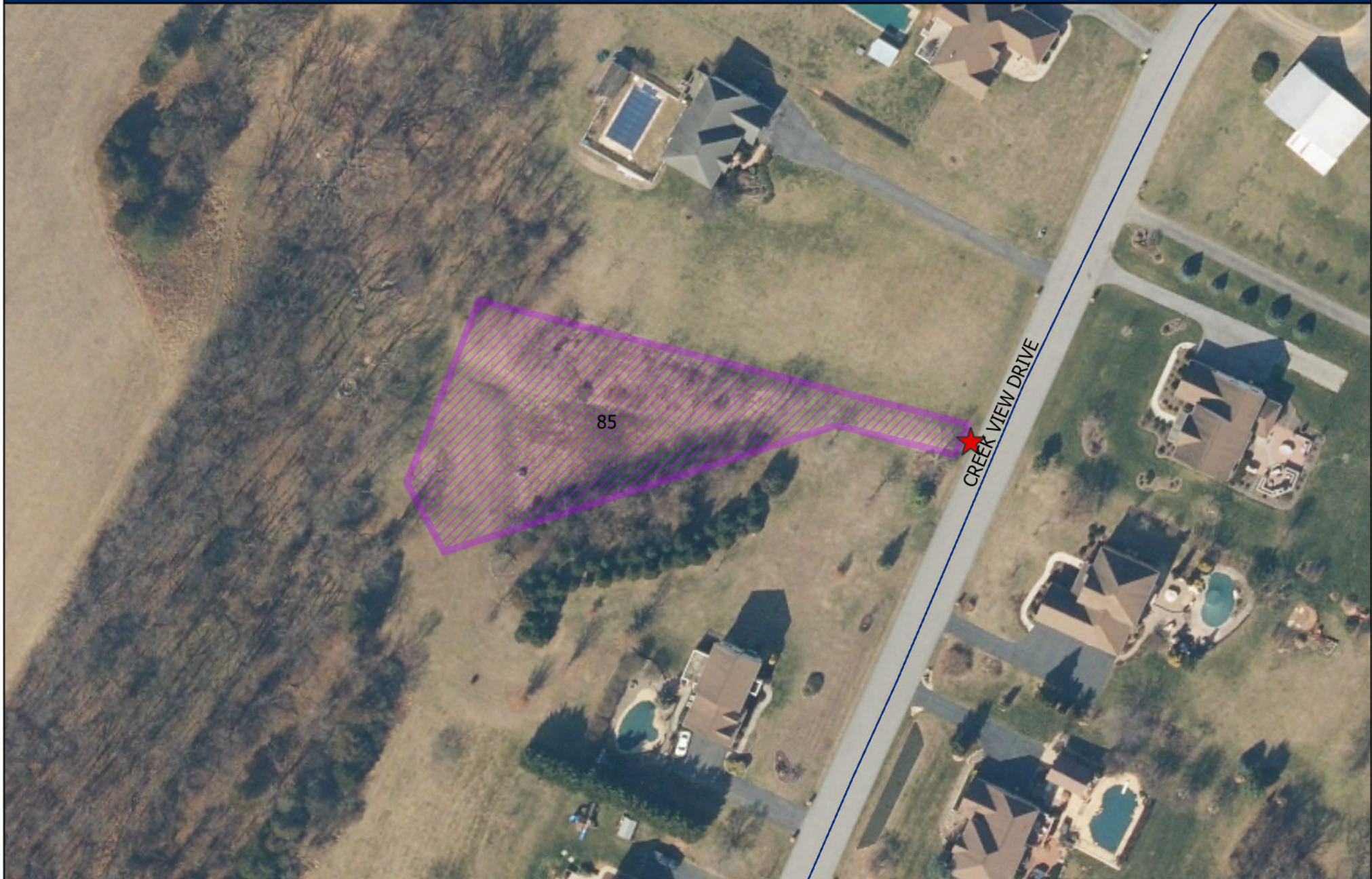
Retention Pond Mowing Services
Section A (North)



Contract Pond Number: 85 (Approximate Acreage 0.6)



Washington County
STORMWATER AND WATERSHED SERVICES



Access Point: Access adjacent to 13624 Creek View
Drive Hagerstown, MD 21740

Retention Pond Mowing Services
Section A (North)



Contract Pond Number: 86 (Approximate Acreage 0.3)



Access Point: Access adjacent to 13605 Creek View
Drive Hagerstown, MD 21740

Retention Pond Mowing Services
Section A (North)



Contract Pond Number: 78 (Approximate Acreage 1)



Access Point: Access at end of Bivens Lane b/t 17010
and 17000 Hagerstown, MD 21740

Retention Pond Mowing Services
Section A (North)



Contract Pond Number: 53 (Approximate Acreage 1.5)



Washington County
STORMWATER AND WATERSHED SERVICES



Access Point: Access B/t 13730 and 13846 Patriot Way
Hagerstown, MD 21740

Retention Pond Mowing Services
Section A (North)



Contract Pond Number: 54 (Approximate Acreage 1.8)



Washington County
STORMWATER AND WATERSHED SERVICES



Access Point: Access east side of Seneca Ridge 150' north
of Maugans Avenue, Hagerstown MD
21740

Retention Pond Mowing Services
Section A (North)



Contract Pond Number: 55 (Approximate Acreage 1)



Washington County

STORMWATER AND WATERSHED SERVICES



Access Point: Access west side of Seneca Ridge 150'
north of Maugans Avenue, Hagerstown MD
21740

Retention Pond Mowing Services
Section A (North)



Contract Pond Number: 56 (Approximate Acreage 0.9)



Washington County
STORMWATER AND WATERSHED SERVICES

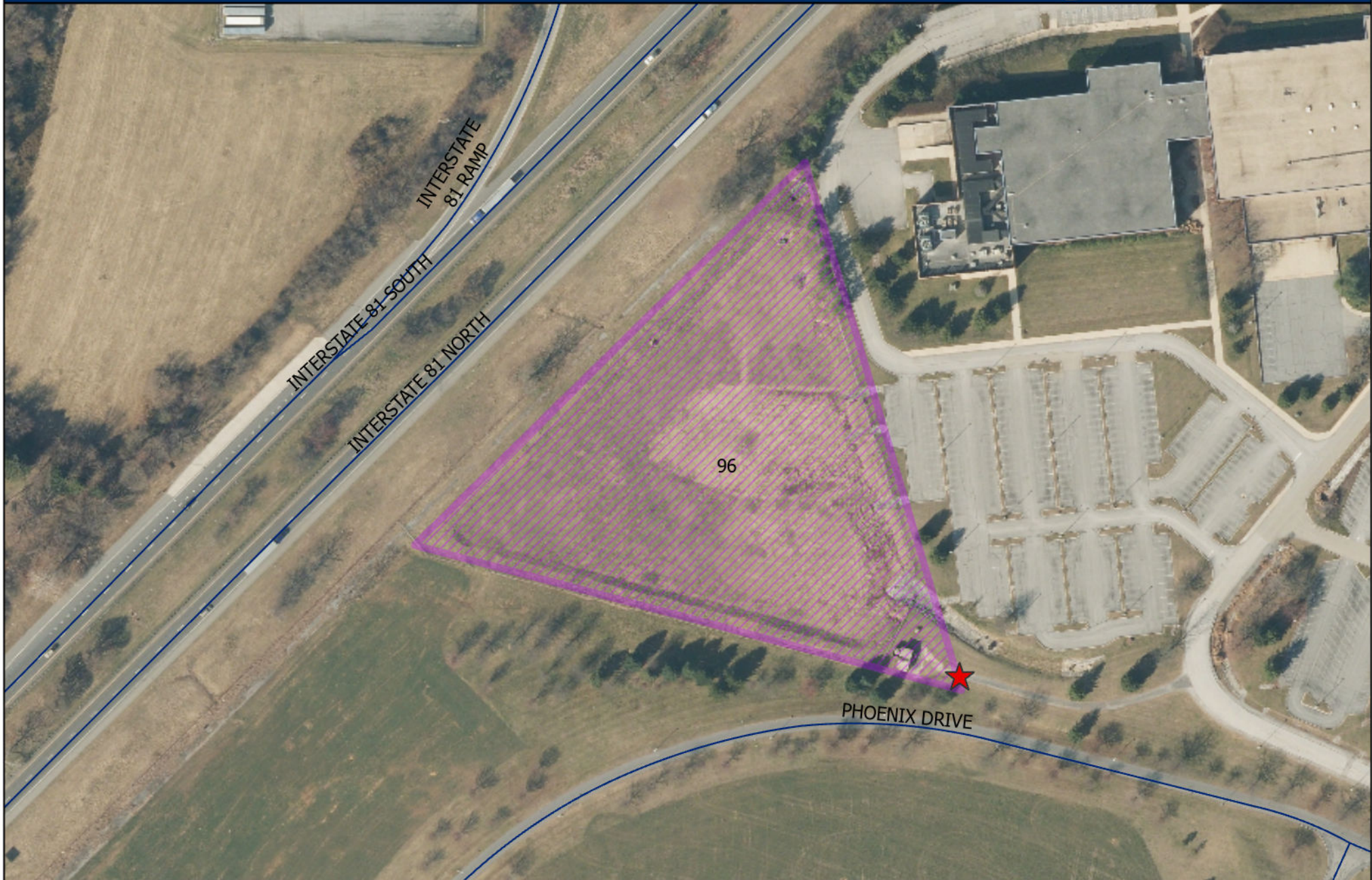


Access Point: Access from across from 14207 Shelby Circle, Hagerstown MD 21740

Retention Pond Mowing Services
Section A (North)



Contract Pond Number: 96 (Approximate Acreage 5)



Access Point: Access at pump station 14704 Citicorp Dr
Hagerstown, MD 21740

Retention Pond Mowing Services
Section A (North)



Contract Pond Number: 49 (Approximate Acreage 1.6)



Washington County
STORMWATER AND WATERSHED SERVICES



Access Point: Access intersection of Sweet Vale Drive
and Diller Drive, 18813 Diller Drive
Hagerstown, MD 21742

Retention Pond Mowing Services
Section A (North)



Contract Pond Number: 50 (Approximate Acreage 0.6)



Access Point: Access B/t 18828 and 18836 Diller Drive
Hagerstown, MD 21742

Retention Pond Mowing Services
Section A (North)



Contract Pond Number: 51 (Approximate Acreage 0.9)



Washington County
STORMWATER AND WATERSHED SERVICES



Access Point: Access B/t 18914 and 18924 Diller Drive
Hagerstown, MD 21742

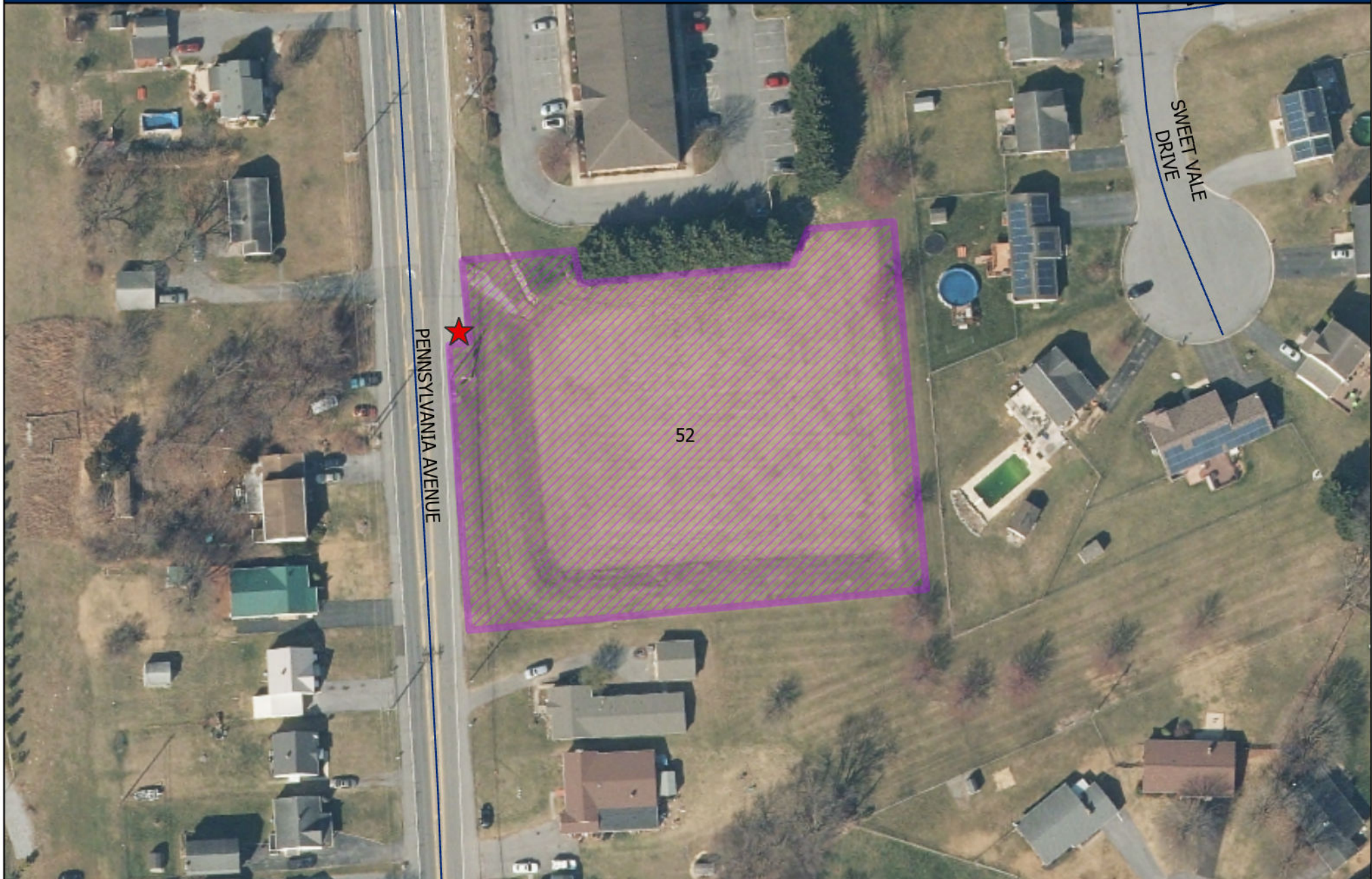
Retention Pond Mowing Services
Section A (North)



Contract Pond Number: 52 (Approximate Acreage 1.5)



Washington County
STORMWATER AND WATERSHED SERVICES



Access Point: Access across the street from 13930
Pennsylvania Avenue Hagerstown, MD
21742

Retention Pond Mowing Services
Section A (North)



Contract Pond Number: 97 (Approximate Acreage 1.8)



Washington County
STORMWATER AND WATERSHED SERVICES



Access Point: Access through curb cut b/t 18541 and
18537 Maugans Avenue Hagerstown, MD
21740

Retention Pond Mowing Services
Section A (North)



Contract Pond Number: 45 (Approximate Acreage 1.6)



Access Point: Access B/t 13602 and 13572 Cambridge
Drive Hagerstown, MD 21742

Retention Pond Mowing Services
Section A (North)



Contract Pond Number: 46 (Approximate Acreage 3)



Access Point: Access next to 13852 Ideal Circle
Hagerstown, MD 21742

Retention Pond Mowing Services
Section A (North)



Contract Pond Number: 48 (Approximate Acreage 1.8)



Washington County
STORMWATER AND WATERSHED SERVICES



Access Point: Access point b/t 19310 and 19306 Paradise
Manor Drive Hagerstown, MD 21742

Retention Pond Mowing Services
Section A (North)



Contract Pond Number: 47 (Approximate Acreage 1.6)



Access Point: Access B/t 13807 and 13819 Exeter Court
Hagerstown, MD 21742

Retention Pond Mowing Services
Section A (North)



Contract Pond Number: 44 (Approximate Acreage 2.6)



Washington County

STORMWATER AND WATERSHED SERVICES



Access Point: Access B/t 19211 and 19123 Rock Maple
Drive Hagerstown, MD 21742

Retention Pond Mowing Services
Section A (North)



Contract Pond Number: 43 (Approximate Acreage 0.6)



Washington County
STORMWATER AND WATERSHED SERVICES

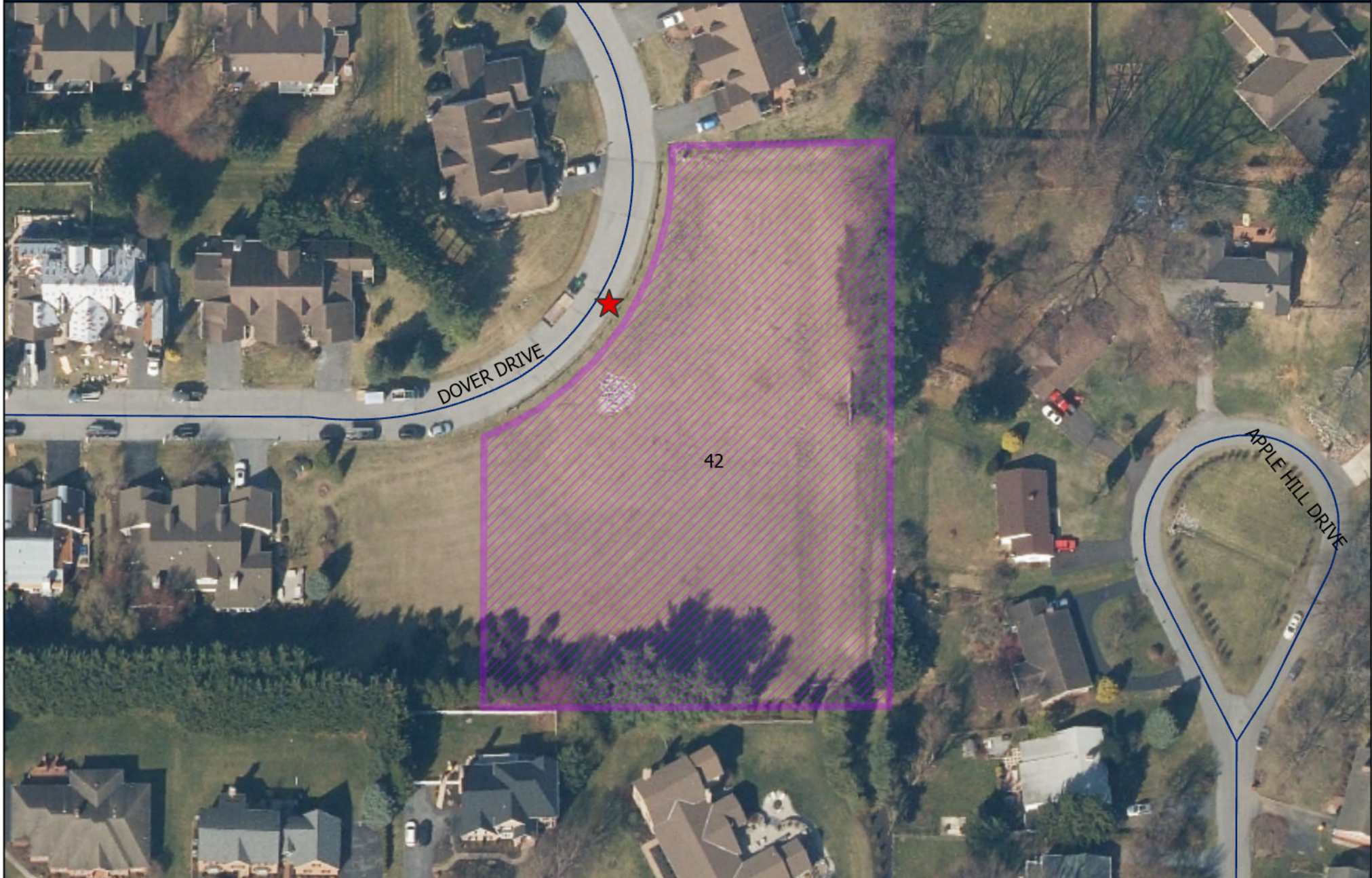


Access Point: Access intersection of Longmeadow Road
and Paradise Church Road Hagerstown,
MD 21742

Retention Pond Mowing Services
Section A (North)



Contract Pond Number: 42 (Approximate Acreage 1.8)



Access Point: Access B/t 18817 and 18901 Dover Drive
Hagerstown, MD 21742

Retention Pond Mowing Services
Section A (North)



Contract Pond Number: 36 (Approximate Acreage 0.4)



Washington County

STORMWATER AND WATERSHED SERVICES



Access Point: Access B/t 19222 and 19224 Jamestown
Drive Hagerstown, MD 21742

Retention Pond Mowing Services
Section A (North)



Contract Pond Number: 38 (Approximate Acreage 0.8)



Washington County

STORMWATER AND WATERSHED SERVICES



Access Point: Access intersection of Primrose Lane and Marigold Drive Hagerstown, MD 21742

Retention Pond Mowing Services
Section A (North)



Contract Pond Number: 39 (Approximate Acreage 0.5)



Access Point: Access B/t 19723 and 19715 Marigold
Drive Hagerstown, MD 21742

Retention Pond Mowing Services
Section A (North)



Contract Pond Number: 41 (Approximate Acreage 0.6)



Washington County

STORMWATER AND WATERSHED SERVICES



Access Point: Access from Mattley Drive adjacent to
12903 Mattley Drive Hagerstown, MD
21740

Retention Pond Mowing Services
Section A (North)



Contract Pond Number: 35 (Approximate Acreage 0.7)



Access Point: Access in front of 12827 El Paso Drive at
Little Antietam Road and El Paso Drive
Hagerstown, MD 21740

Retention Pond Mowing Services
Section A (North)



Contract Pond Number: 37 (Approximate Acreage 1.5)



Access Point: Access next to 22107 Whitestone Court
Smithsburg, MD 21783

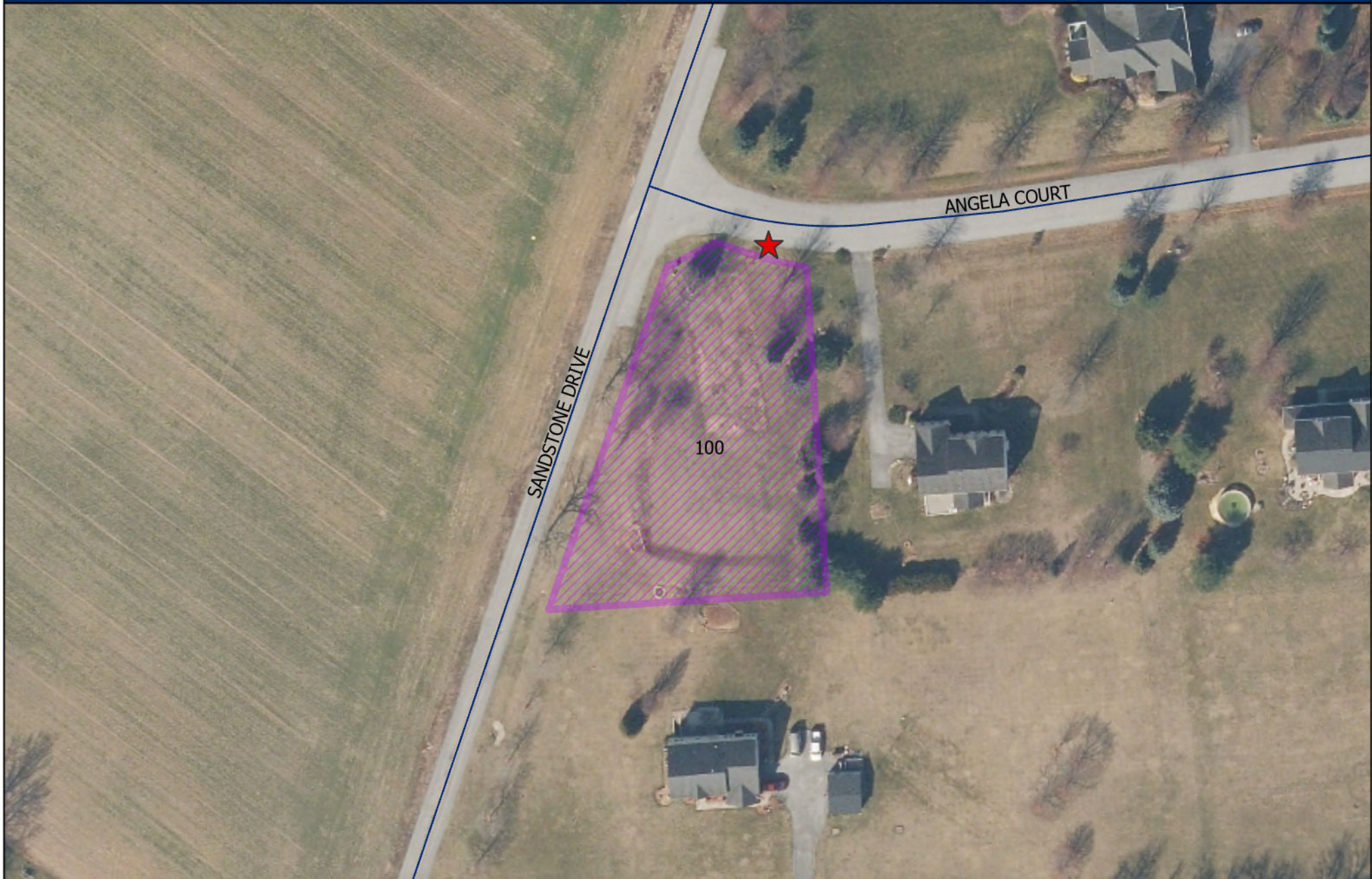
Retention Pond Mowing Services
Section A (North)



Contract Pond Number: 100(Approximate Acreage 0.7)



Washington County
STORMWATER AND WATERSHED SERVICES



Access Point: Access next to 23303 Angela Court
Smithsburg, MD 21783

Retention Pond Mowing Services
Section A (North)



Contract Pond Number: 101 (Approximate Acreage 1.1)



Access Point: Access end of cul de sac on Angela Court,
Smithsburg, MD 21783

Retention Pond Mowing Services
Section A (North)



Contract Pond Number: 34 (Approximate Acreage 0.6)



Washington County
STORMWATER AND WATERSHED SERVICES



Access Point: Access Foxville Road and Appalachian
Court Smithsburg, MD 21783

Retention Pond Mowing Services
Section A (North)



Contract Pond Number: 40 (Approximate Acreage 1)



Washington County

STORMWATER AND WATERSHED SERVICES



Access Point: Access B/t 11432 and 11424 Orange
Blossom Court Smithsburg, MD 21783

Retention Pond Mowing Services
Section A (North)



Contract Pond Number: 16 (Approximate Acreage 1.9)



Access Point: Access west side of the intersection of
Woodbridge Drive and Robinwood Drive
Hagerstown, MD 21740

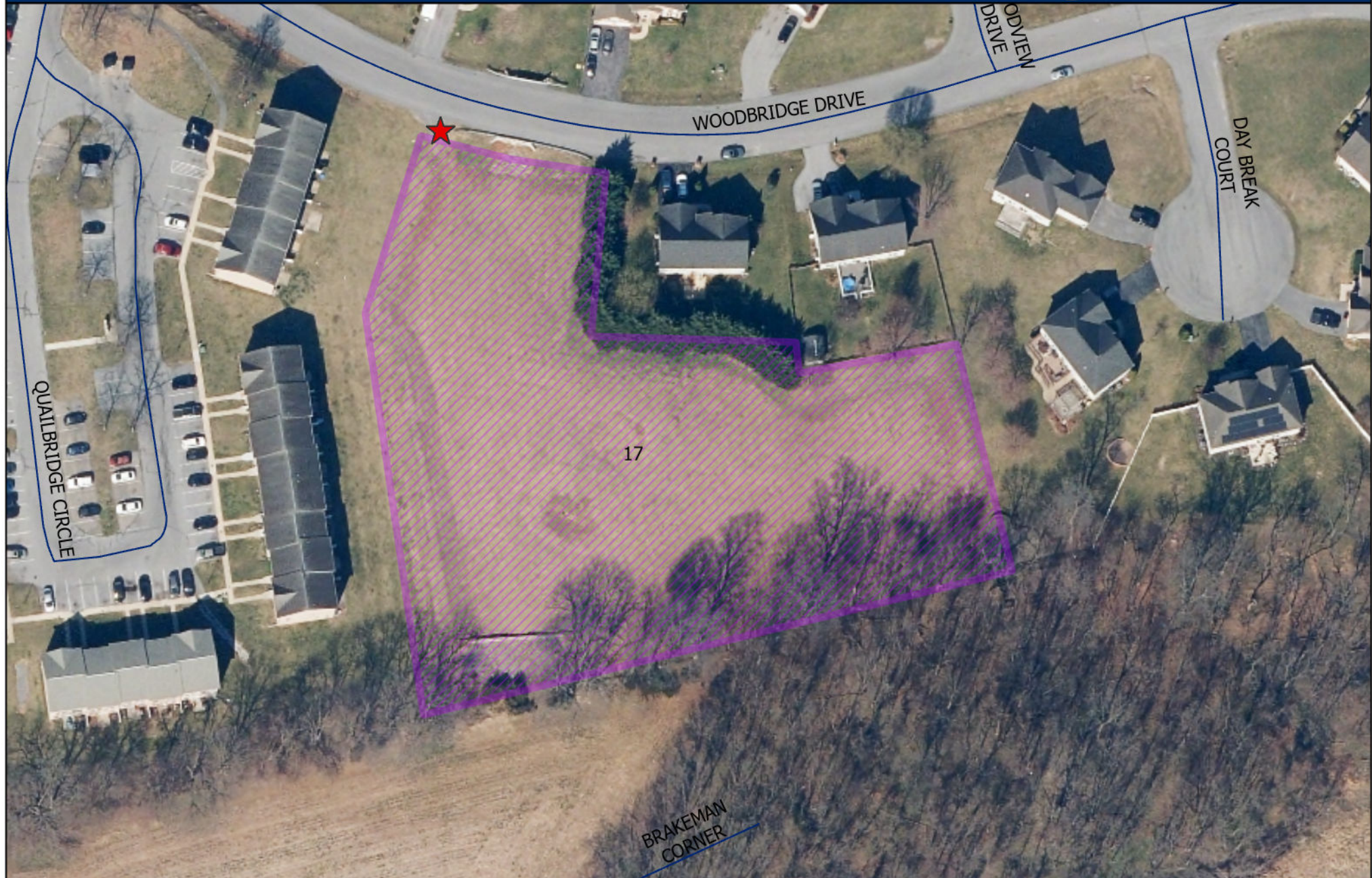
Retention Pond Mowing Services
Section A (North)



Contract Pond Number: 17 (Approximate Acreage 2.1)



Washington County
STORMWATER AND WATERSHED SERVICES



Access Point: Access across from 20526 Woodbridge
Drive Hagerstown, MD 21740

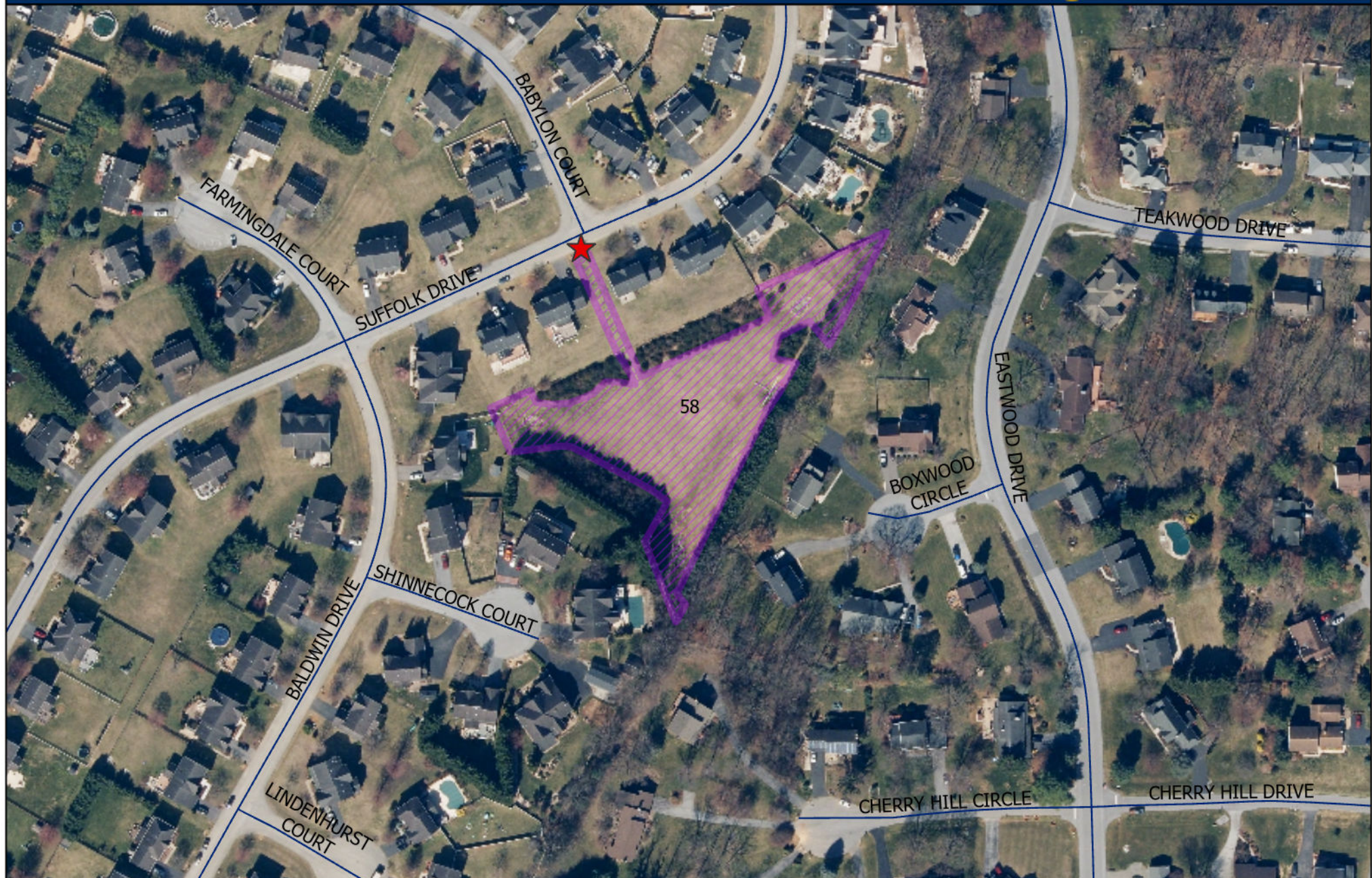
Retention Pond Mowing Services
Section A (North)



Contract Pond Number: 58 (Approximate Acreage 1.5)



Washington County
STORMWATER AND WATERSHED SERVICES



Access Point: Access B/t 11109 and 11113 Suffolk Drive
Hagerstown, MD 21742

Retention Pond Mowing Services
Section A (North)



Contract Pond Number: 57 (Approximate Acreage 1.4)



Washington County
STORMWATER AND WATERSHED SERVICES



Access Point: Access road off Sani Lane b/t 11020 and 11014 Hagerstown, MD 21742

Retention Pond Mowing Services
Section A (North)



Contract Pond Number: 18 (Approximate Acreage 2.5)



Washington County
STORMWATER AND WATERSHED SERVICES



Access Point: Access off of cul-de-sac of Avonlea Hills
Court to rear of 10609 Avonlea Hills COURT
Hagerstown, MD 21740

Retention Pond Mowing Services
Section A (North)



Contract Pond Number: 19 (Approximate Acreage 0.9)



Access Point: Access from Easterday Court Hagerstown,
MD 21740

Retention Pond Mowing Services
Section A (North)



Contract Pond Number: 14 (Approximate Acreage 0.9)



Washington County
STORMWATER AND WATERSHED SERVICES



Access Point: Access at Eagle Lane behind the Pumping
Station Hagerstown, MD 21740

Retention Pond Mowing Services
Section A (North)



Contract Pond Number: 107 (Approximate Acreage 0.5)



Washington County
STORMWATER AND WATERSHED SERVICES



Access Point: Access across the street from 449
Westminster Court Hagerstown, MD 21740

Retention Pond Mowing Services
Section A (North)



Contract Pond Number: 15 (Approximate Acreage 0.4)



Washington County
STORMWATER AND WATERSHED SERVICES



Access Point: Access beside 457 Westminster Court
Hagerstown, MD 21740

Retention Pond Mowing Services
Section A (North)



Contract Pond Number: 11 (Approximate Acreage 1.8)



Access Point: Access at the dead end of Oakmont Drive
Hagerstown, MD 21740

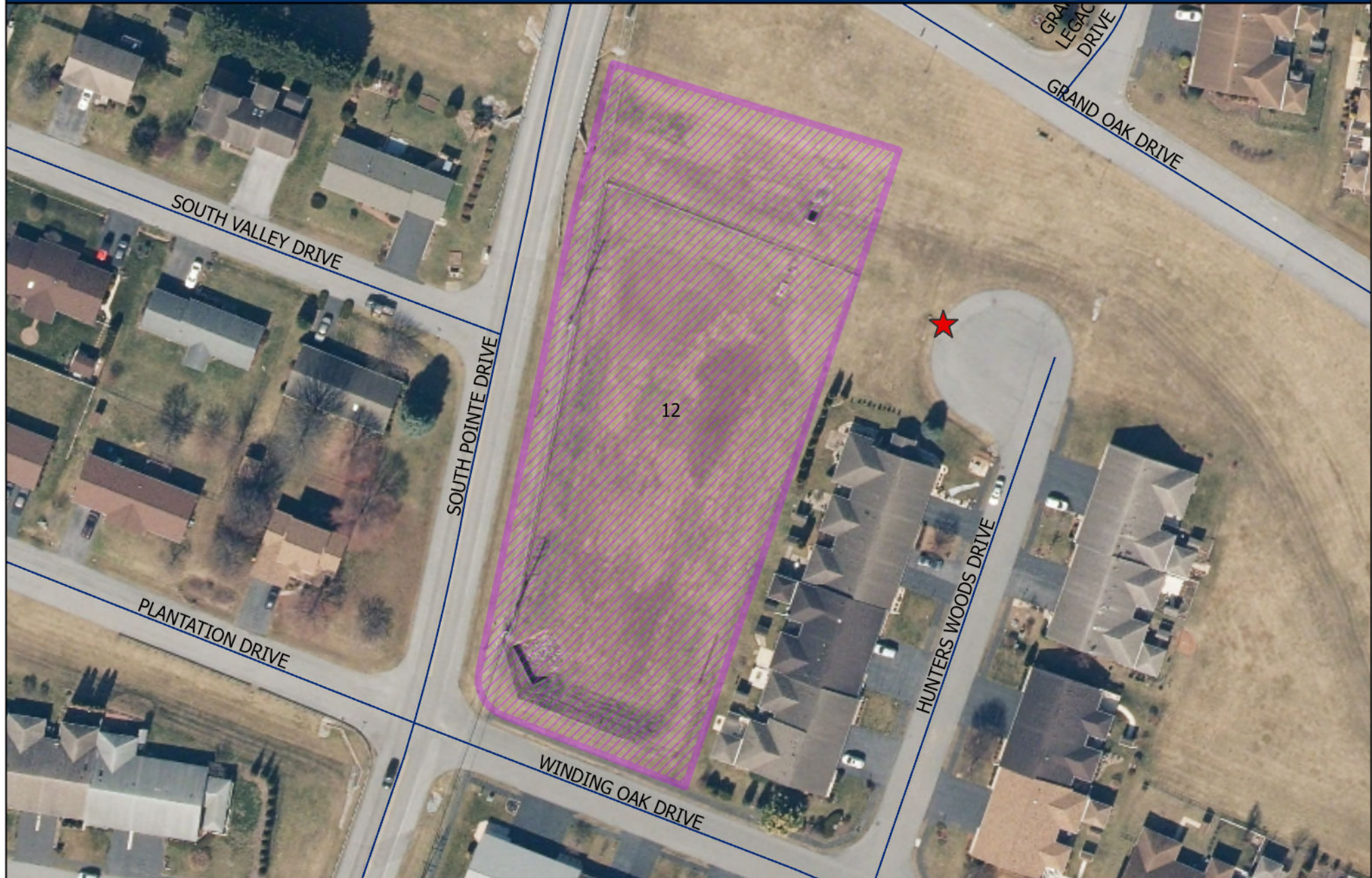
Retention Pond Mowing Services
Section A (North)



Contract Pond Number: 12 (Approximate Acreage 1.7)



Washington County
STORMWATER AND WATERSHED SERVICES



Access Point: Access South Pointe Drive at the corner of
Winding Oak Drive Hagerstown, MD
21740

Retention Pond Mowing Services
Section A (North)



Contract Pond Number: 09 (Approximate Acreage 0.4)



Access Point: Access beside 17904 Sand Wedge Drive
Hagerstown, MD 21740 at the end of cul-
de-sac

Retention Pond Mowing Services
Section A (North)



Contract Pond Number: 98 (Approximate Acreage 1.9)

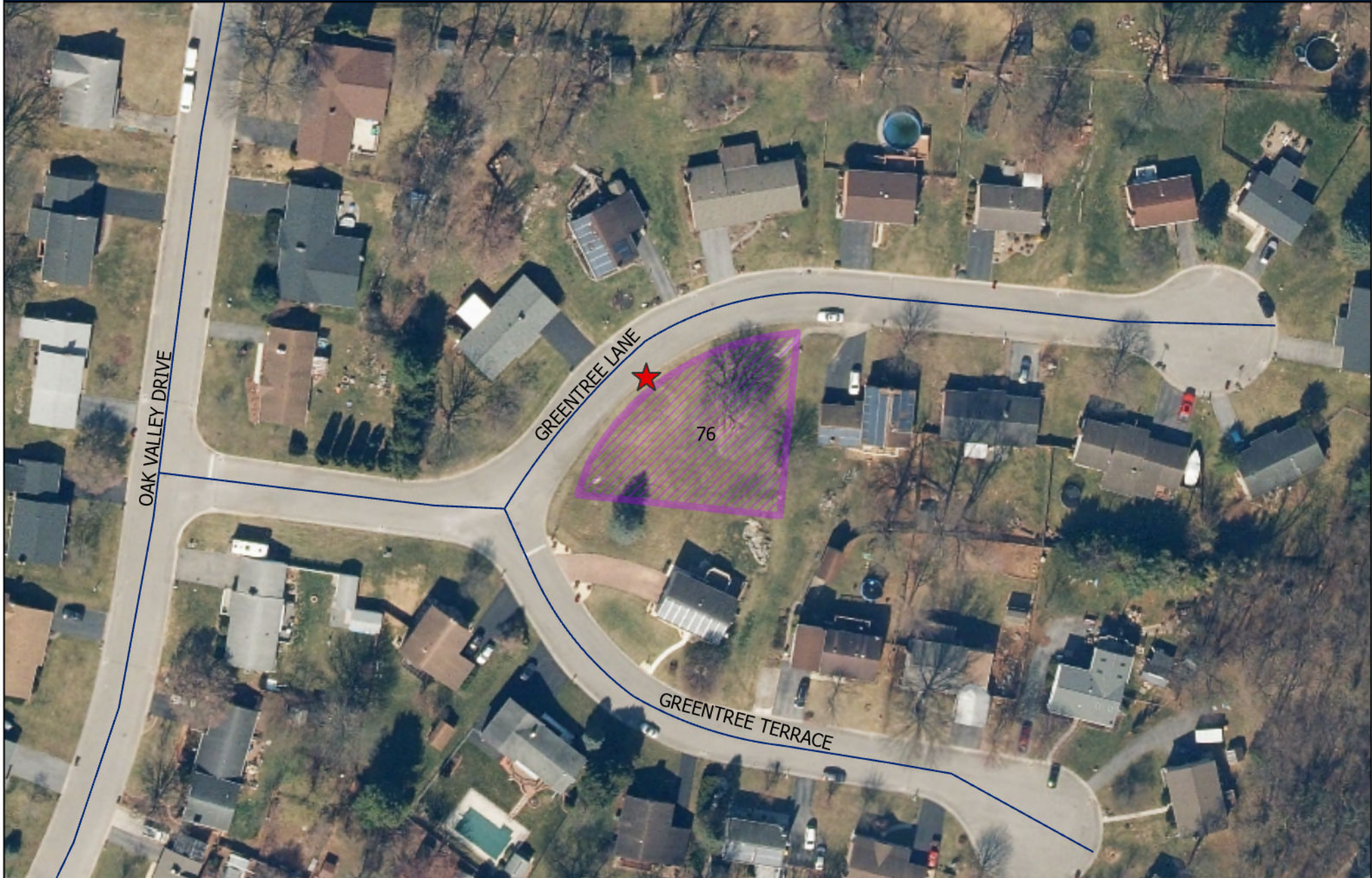


Access Point: Access across street from 17823 Oak Ridge Drive Hagerstown, MD 21740

Retention Pond Mowing Services
Section A (North)



Contract Pond Number: 76 (Approximate Acreage 0.3)



Access Point: Access B/t 17806 Greentree Terrace and
17813 Greentree Lane Hagerstown, MD
21740

Retention Pond Mowing Services
Section A (North)



Contract Pond Number: 77 (Approximate Acreage 0.9)



Access Point: Access adjacent to 17303 Evergreen Drive,
Hagerstown MD 21740

Retention Pond Mowing Services
Section A (North)



Contract Pond Number: 99 (Approximate Acreage 3.3)



Washington County
STORMWATER AND WATERSHED SERVICES



Access Point: Access at 205 Western Maryland Parkway
Hagerstown, MD 21740 at pump station

Retention Pond Mowing Services
Section A (North)



Contract Pond Number: 105 (Approximate Acreage 1.3)



Washington County
STORMWATER AND WATERSHED SERVICES



Access Point: Access on Enterprise Lane off of Western
Maryland Parkway Hagerstown, MD 21740

Retention Pond Mowing Services
Section A (North)



Contract Pond Number: 106(Approximate Acreage 3.6)



Washington County

STORMWATER AND WATERSHED SERVICES

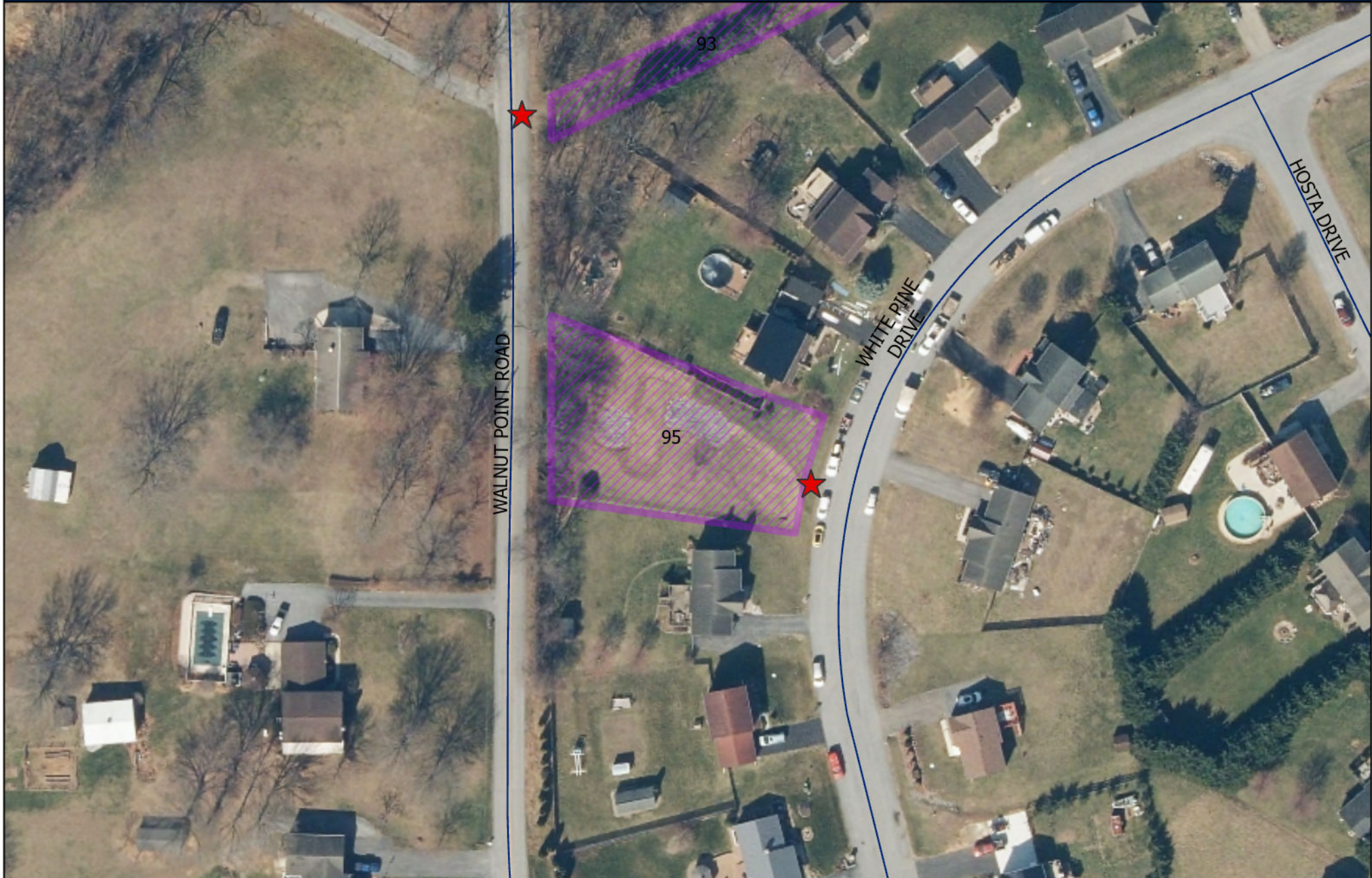


Access Point: Access road on left after fence of Ryder
Truck Rental LLC on Business Parkway,
Hagerstown, MD 21740

Retention Pond Mowing Services
Section A (North)



Contract Pond Number: 95 (Approximate Acreage 0.4)



Access Point: Access at 11809 White Pine Drive,
Hagerstown MD 21740

Retention Pond Mowing Services
Section A (North)



Contract Pond Number: 94 (Approximate Acreage 1.9)



Washington County
STORMWATER AND WATERSHED SERVICES



Access Point: Access northside of Walnut Point Road
Across from 11822 Walnut Point Road
Hagerstown, MD 21740

Retention Pond Mowing Services
Section A (North)



Contract Pond Number: 93 (Approximate Acreage 1.3)



Washington County

STORMWATER AND WATERSHED SERVICES



Access Point: Access from Walnut Point Road 140' North of 11924 Walnut Point Road Hagerstown, MD 21740

Retention Pond Mowing Services
Section A (North)

