

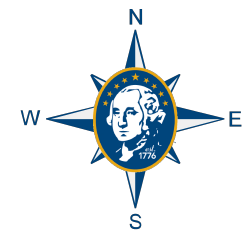
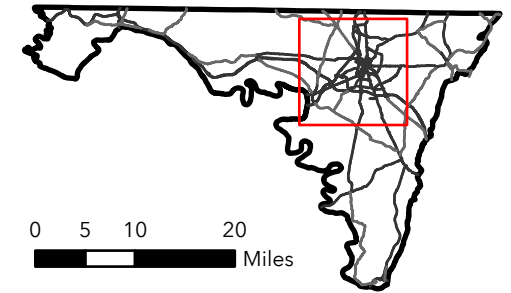


# Public Right-of-Way ADA Compliance Survey

Washington County, Maryland  
Division of Engineering  
2024

-  Sidewalk Compliance Survey Region
-  Municipal Boundaries



### Restriction of Liability:

Washington County makes no claims, promises or guarantees about the accuracy, completeness, or adequacy of the contents of these maps and expressly disclaims liability for any errors and omissions in the contents of these documents

